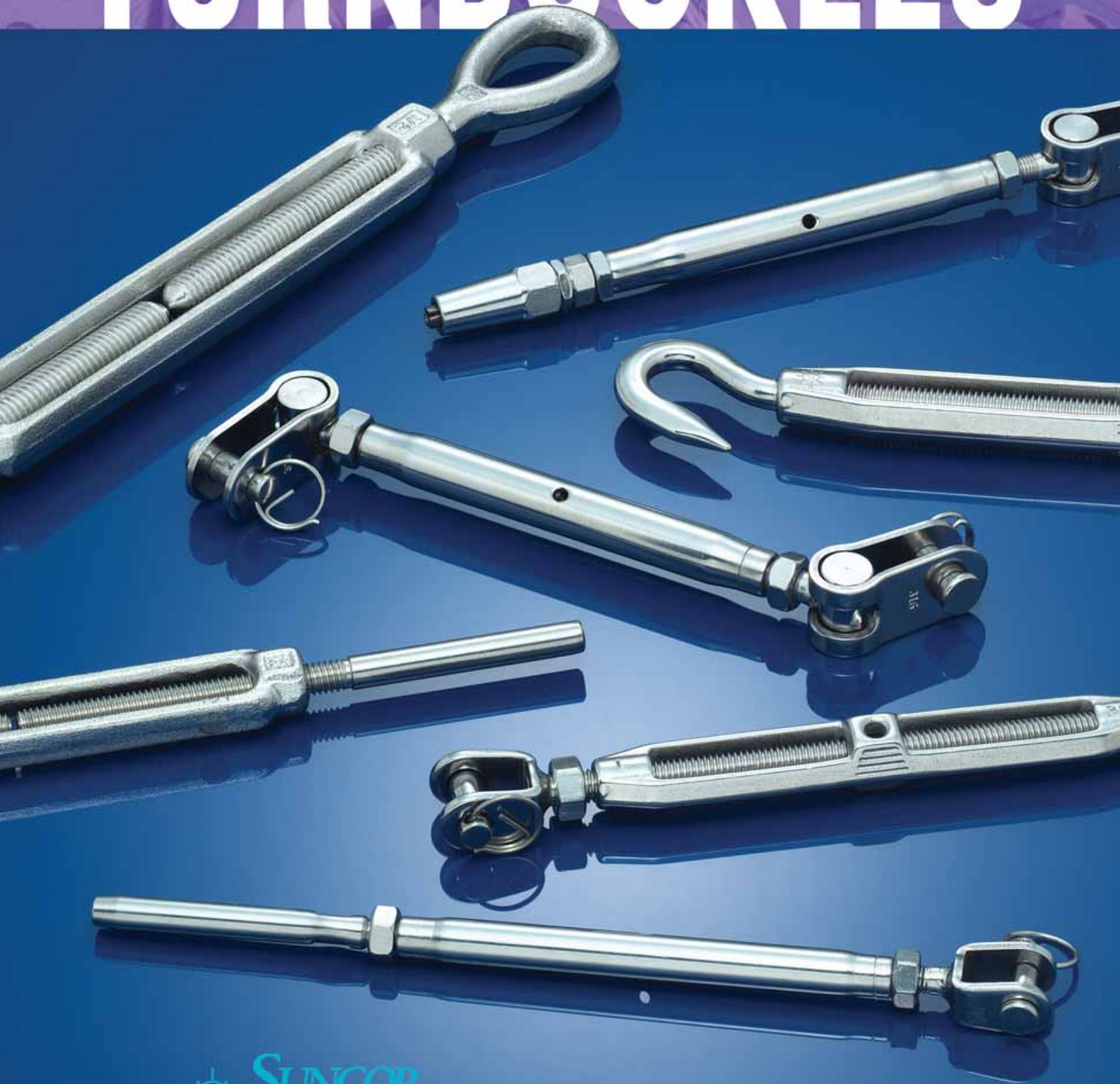
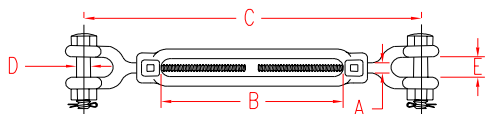


SUNCOR STAINLESS, INC.

TURNBUCKLES



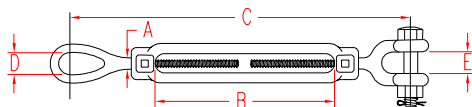
TURNBUCKLE JAW & JAW 316-NM STAINLESS STEEL



| ITEM | A | B | C | D | E | WLL | WT |
|--------------|--------|--------------|--------|-------|-------|--------|-------|
| | (size) | (adjustment) | | | | (lb) | (lb) |
| S0108-JJ07 | 1/4" | 4.00" | 7.75" | 0.25" | 0.44" | 500 | 0.45 |
| S0108-JJ08 | 5/16" | 4.50" | 9.00" | 0.25" | 0.50" | 800 | 0.65 |
| S0108-JJ10 | 3/8" | 6.00" | 10.63" | 0.31" | 0.56" | 1,200 | 0.90 |
| S0108-JJ13 | 1/2" | 6.00" | 12.00" | 0.38" | 0.63" | 2,200 | 1.60 |
| S0108-JJ16 | 5/8" | 6.00" | 13.50" | 0.50" | 0.75" | 3,500 | 3.05 |
| S0108-JJ20 | 3/4" | 6.00" | 15.00" | 0.63" | 1.00" | 5,200 | 4.25 |
| S0108-JJ25 | 1" | 6.00" | 18.00" | 0.88" | 1.25" | 8,000 | 10.59 |
| S0108-JJ25-1 | 1" | 12.00" | 24.00" | 0.88" | 1.25" | 8,000 | 12.66 |
| S0108-JJ32-1 | 1-1/4" | 12.00" | 26.63" | 1.13" | 1.88" | 12,500 | 22.32 |
| S0108-JJ38-1 | 1-1/2" | 12.25" | 28.95" | 1.36" | 2.19" | 17,000 | 31.04 |

NOTE:
MEETS WLL AND DIMENSIONS OF ASTM SPECIFICATION
F1145-92 TYPE 1, CLASS G. BODIES ONLY ON P. 16: S0106-BD SERIES.

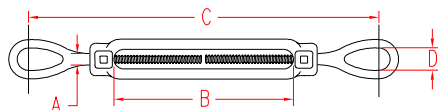
TURNBUCKLE JAW & EYE 316-NM STAINLESS STEEL



| ITEM | A | B | C | D | E | WLL | WT |
|--------------|--------|--------------|--------|-------|-------|--------|-------|
| | (size) | (adjustment) | | | | (lb) | (lb) |
| S0109-JE07 | 1/4" | 4.00" | 7.88" | 0.33" | 0.44" | 500 | 0.35 |
| S0109-JE08 | 5/16" | 4.50" | 9.25" | 0.41" | 0.50" | 800 | 0.60 |
| S0109-JE10 | 3/8" | 6.00" | 11.00" | 0.50" | 0.56" | 1,200 | 0.80 |
| S0109-JE13 | 1/2" | 6.00" | 12.50" | 0.75" | 0.63" | 2,200 | 1.55 |
| S0109-JE16 | 5/8" | 6.00" | 14.00" | 0.87" | 0.75" | 3,500 | 2.69 |
| S0109-JE20 | 3/4" | 6.00" | 15.63" | 1.00" | 1.00" | 5,200 | 4.00 |
| S0109-JE25 | 1" | 6.00" | 19.00" | 1.38" | 1.25" | 8,000 | 9.66 |
| S0109-JE25-1 | 1" | 12.00" | 25.00" | 1.38" | 1.25" | 8,000 | 11.79 |
| S0109-JE32-1 | 1-1/4" | 12.00" | 27.50" | 1.71" | 1.88" | 12,500 | 19.96 |

NOTE:
MEETS WLL AND DIMENSIONS OF ASTM SPECIFICATION
F1145-92 TYPE 1, CLASS H. BODIES ONLY ON P. 16: S0106-BD SERIES.

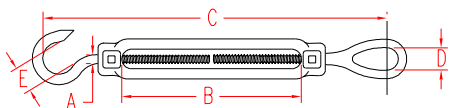
TURNBUCKLE EYE & EYE 316-NM STAINLESS STEEL



| ITEM | A | B | C | D | WLL | WT |
|--------------|--------|--------------|--------|-------|--------|-------|
| | (size) | (adjustment) | | | (lb) | (lb) |
| S0107-EE07 | 1/4" | 4.00" | 8.00" | 0.33" | 500 | 0.30 |
| S0107-EE08 | 5/16" | 4.50" | 9.25" | 0.41" | 800 | 0.50 |
| S0107-EE10 | 3/8" | 6.00" | 11.50" | 0.50" | 1,200 | 0.85 |
| S0107-EE13 | 1/2" | 6.00" | 13.00" | 0.75" | 2,200 | 1.30 |
| S0107-EE16 | 5/8" | 6.00" | 14.50" | 0.87" | 3,500 | 2.30 |
| S0107-EE20 | 3/4" | 6.00" | 16.25" | 1.00" | 5,200 | 3.50 |
| S0107-EE25 | 1" | 6.00" | 20.00" | 1.38" | 8,000 | 8.85 |
| S0107-EE25-1 | 1" | 12.00" | 25.50" | 1.38" | 8,000 | 10.91 |
| S0107-EE32-1 | 1-1/4" | 12.00" | 28.38" | 1.71" | 12,500 | 17.60 |

NOTE:
MEETS WLL AND DIMENSIONS OF ASTM SPECIFICATION F1145-92
TYPE 1, CLASS D. BODIES ONLY ON PAGE 16: S0106-BD SERIES.

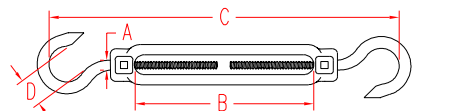
TURNBUCKLE HOOK & EYE 316-NM STAINLESS STEEL



| ITEM | A | B | C | D | E | WLL | WT |
|------------|--------|--------------|--------|-------|-------|-------|------|
| | (size) | (adjustment) | | | | (lb) | (lb) |
| S0110-HE07 | 1/4" | 4.00" | 7.50" | 0.33" | 0.39" | 300 | 0.25 |
| S0110-HE08 | 5/16" | 4.50" | 8.50" | 0.41" | 0.44" | 500 | 0.45 |
| S0110-HE10 | 3/8" | 6.00" | 10.75" | 0.51" | 0.52" | 750 | 0.67 |
| S0110-HE13 | 1/2" | 6.00" | 12.00" | 0.75" | 0.55" | 1,050 | 1.20 |
| S0110-HE16 | 5/8" | 6.00" | 13.50" | 0.87" | 0.57" | 1,600 | 2.10 |
| S0110-HE20 | 3/4" | 6.00" | 15.50" | 1.00" | 0.90" | 2,000 | 3.00 |

NOTE:
MEETS WLL AND DIMENSIONS OF ASTM SPECIFICATION
F1145-92 TYPE 1, CLASS F. BODIES AND EYES ARE FORGED.
HOOKS ARE FORMED AND COLD FORGED. BODIES ONLY
ON PAGE 16: S0106-BD SERIES.

TURNBUCKLE HOOK & HOOK 316-NM STAINLESS STEEL



| ITEM | A | B | C | D | WLL | WT |
|------------|--------|--------------|--------|-------|-------|------|
| | (size) | (adjustment) | | | (lb) | (lb) |
| S0111-HH07 | 1/4" | 4.00" | 6.87" | 0.39" | 300 | 0.22 |
| S0111-HH08 | 5/16" | 4.50" | 7.75" | 0.44" | 500 | 0.35 |
| S0111-HH10 | 3/8" | 6.00" | 10.37" | 0.52" | 750 | 0.60 |
| S0111-HH13 | 1/2" | 6.00" | 10.50" | 0.55" | 1,050 | 1.10 |
| S0111-HH16 | 5/8" | 6.00" | 14.25" | 0.57" | 1,600 | 1.90 |
| S0111-HH20 | 3/4" | 6.00" | 14.25" | 0.90" | 2,000 | 2.75 |

NOTE:
MEETS WLL AND DIMENSIONS OF ASTM SPECIFICATION
F1145-92 TYPE 1, CLASS E. BODIES AND EYES ARE FORGED.
HOOKS ARE FORMED AND COLD FORGED. BODIES ONLY
ON PAGE 16: S0106-BD SERIES.

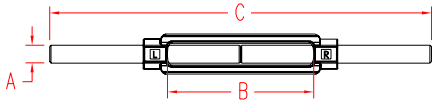


TEL 508-732-9191 • FAX 508-732-9798 • ORDERS ONLY 800-394-2222

www.suncorstainless.com

TURNBUCKLES

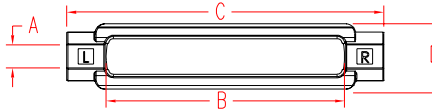
TURNBUCKLE STUB & STUB 316-NM STAINLESS STEEL



| ITEM | A (size) | B (adjustment) | C | WLL (lb) | WT (lb) |
|--------------|-------------|-------------------|--------|-------------|------------|
| S0112-SS07 | 1/4" | 4.00" | 9.00" | 500 | 0.27 |
| S0112-SS08 | 5/16" | 4.50" | 10.50" | 800 | 0.67 |
| S0112-SS10 | 3/8" | 6.00" | 13.00" | 1,200 | 0.72 |
| S0112-SS13 | 1/2" | 6.00" | 14.13" | 2,200 | 1.23 |
| S0112-SS16 | 5/8" | 6.00" | 15.00" | 3,500 | 2.25 |
| S0112-SS20 | 3/4" | 6.00" | 16.00" | 5,200 | 3.19 |
| S0112-SS25 | 1" | 6.00" | 18.00" | 8,000 | 6.32 |
| S0112-SS25-1 | 1" | 12.00" | 24.38" | 8,000 | 10.43 |
| S0112-SS32-1 | 1-1/4" | 12.00" | 26.00" | 12,500 | 14.75 |

NOTE:
MEETS WLL AND DIMENSIONS OF ASTM SPECIFICATION F1145-92 TYPE 1, CLASS C.

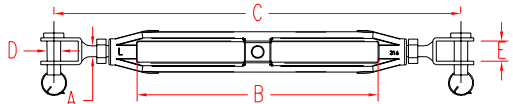
TURNBUCKLE BODY 316-NM STAINLESS STEEL



| ITEM | A (size) | B (adjustment) | C | D | WLL (lb) | WT (lb) |
|--------------|-------------|-------------------|--------|-------|-------------|------------|
| S0106-BD07 | 1/4" | 4.00" | 4.75" | 0.72" | 500 | 0.15 |
| S0106-BD08 | 5/16" | 4.50" | 5.50" | 0.82" | 800 | 0.25 |
| S0106-BD10 | 3/8" | 6.00" | 7.13" | 0.97" | 1,200 | 0.35 |
| S0106-BD13 | 1/2" | 6.00" | 7.50" | 1.16" | 2,200 | 0.55 |
| S0106-BD16 | 5/8" | 6.00" | 7.81" | 1.38" | 3,500 | 0.90 |
| S0106-BD20 | 3/4" | 6.00" | 8.19" | 1.69" | 5,200 | 1.15 |
| S0106-BD25 | 1" | 6.00" | 9.00" | 2.31" | 8,000 | 2.69 |
| S0106-BD25-1 | 1" | 12.00" | 14.81" | 2.31" | 8,000 | 4.17 |
| S0106-BD32-1 | 1-1/4" | 12.00" | 15.13" | 2.62" | 12,500 | 5.90 |

NOTE:
MEETS WLL & DIMENSIONS OF ASTM SPECIFICATION F1145-92, TYPE 1.

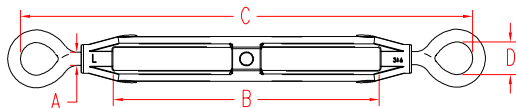
TURNBUCKLE OPEN JAW & JAW 316 STAINLESS STEEL



| ITEM | A (size) | B (adjustment) | C | D | E | WLL (lb) |
|------------|-------------|-------------------|--------|-------|-------|-------------|
| S0105-0005 | 3/16" | 2.50" | 4.81" | 0.18" | 0.30" | 300 |
| S0105-0007 | 1/4" | 3.00" | 5.75" | 0.22" | 0.38" | 440 |
| S0105-0008 | 5/16" | 4.00" | 7.12" | 0.30" | 0.40" | 800 |
| S0105-0010 | 3/8" | 6.00" | 10.00" | 0.37" | 0.46" | 1,200 |
| S0105-0013 | 1/2" | 6.00" | 11.00" | 0.46" | 0.59" | 2,200 |
| S0105-0016 | 5/8" | 8.00" | 14.50" | 0.63" | 0.69" | 2,800 |
| S0105-0020 | 3/4" | 10.00" | 18.00" | 0.73" | 0.76" | 3,500 |

NOTE:
ECONOMICAL, YET HIGH QUALITY TURNBUCKLE WITH PRECISION CAST BODY. JAWS ARE FORMED AND WELDED. THREADS ARE STANDARD "UNC".

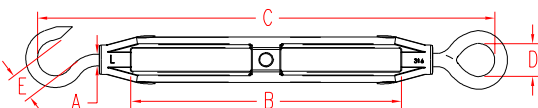
TURNBUCKLE EYE & EYE 316 STAINLESS STEEL



| ITEM | A (size) | B (adjustment) | C | D | WLL (lb) | WT (lb) |
|------------|-------------|-------------------|--------|-------|-------------|------------|
| S0154-EE05 | 3/16" | 2.50" | 5.19" | 0.38" | 300 | 0.08 |
| S0154-EE07 | 1/4" | 3.00" | 5.90" | 0.44" | 440 | 0.18 |
| S0154-EE08 | 5/16" | 4.00" | 7.00" | 0.50" | 800 | 0.33 |
| S0154-EE10 | 3/8" | 6.00" | 10.25" | 0.65" | 1,200 | 0.68 |
| S0154-EE13 | 1/2" | 6.00" | 10.81" | 0.75" | 2,200 | 1.31 |
| S0154-EE16 | 5/8" | 8.00" | 14.32" | 0.87" | 2,800 | 2.40 |
| S0154-EE20 | 3/4" | 10.00" | 17.31" | 1.10" | 3,500 | 4.33 |

NOTE:
ECONOMICAL, YET HIGH QUALITY TURNBUCKLE WITH PRECISION CAST BODY. EYES ARE FORMED AND WELDED. THREADS ARE STANDARD "UNC".

TURNBUCKLE HOOK & EYE 316 STAINLESS STEEL



| ITEM | A (size) | B (adjustment) | C | D | E | WLL (lb) |
|------------|-------------|-------------------|--------|-------|-------|-------------|
| S0154-HE05 | 3/16" | 2.50" | 5.12" | 0.38" | 0.30" | 100 |
| S0154-HE07 | 1/4" | 3.00" | 5.87" | 0.44" | 0.38" | 200 |
| S0154-HE08 | 5/16" | 4.00" | 7.12" | 0.50" | 0.44" | 400 |
| S0154-HE10 | 3/8" | 6.00" | 10.25" | 0.65" | 0.50" | 700 |
| S0154-HE13 | 1/2" | 6.00" | 11.62" | 0.75" | 0.63" | 1,000 |
| S0154-HE16 | 5/8" | 8.00" | 14.50" | 0.87" | 0.63" | 1,600 |
| S0154-HE20 | 3/4" | 10.00" | 17.00" | 1.10" | 0.85" | 2,000 |

NOTE:
ECONOMICAL, YET HIGH QUALITY TURNBUCKLE WITH PRECISION CAST BODY. EYE IS ARE FORMED AND WELDED. THREADS ARE STANDARD "UNC".



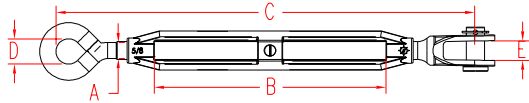
Key:



ORDERS ONLY: 800-394-2222 (USA)
877-495-5510 (CANADA)

All logos, icons, images, measurements and descriptions are the sole property of Suncor Stainless, Inc.
© 2002 Suncor Stainless, Inc.

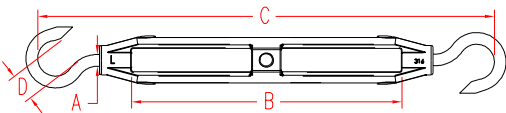
TURNBUCKLE JAW & EYE 316 STAINLESS STEEL



| ITEM | A (size) | B (adjustment) | C | D | E | WLL (lb) |
|------------|-------------|-------------------|--------|-------|-------|-------------|
| S0154-JE05 | 3/16" | 2.50" | 5.12" | 0.38" | 0.30" | 100 |
| S0154-JE07 | 1/4" | 3.00" | 5.87" | 0.44" | 0.38" | 200 |
| S0154-JE08 | 5/16" | 4.00" | 7.12" | 0.50" | 0.44" | 400 |
| S0154-JE10 | 3/8" | 6.00" | 10.25" | 0.65" | 0.50" | 700 |
| S0154-JE13 | 1/2" | 6.00" | 11.62" | 0.75" | 0.63" | 1,000 |
| S0154-JE16 | 5/8" | 8.00" | 14.50" | 0.87" | 0.63" | 1,600 |
| S0154-JE20 | 3/4" | 10.00" | 17.00" | 1.10" | 0.85" | 2,000 |

NOTE:
ECONOMICAL, YET HIGH QUALITY TURNBUCKLE WITH PRECISION CAST BODY. JAW AND EYE ARE FORMED AND WELDED. THREADS ARE STANDARD "UNC".

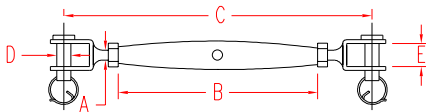
TURNBUCKLE HOOK & HOOK 316 STAINLESS STEEL



| ITEM | A (size) | B (adjustment) | C | D | WLL (lb) | WT (lb) |
|------------|-------------|-------------------|--------|-------|-------------|------------|
| S0154-HH05 | 3/16" | 2.50" | 4.94" | 0.30" | 100 | 0.07 |
| S0154-HH07 | 1/4" | 3.00" | 6.18" | 0.38" | 200 | 0.17 |
| S0154-HH08 | 5/16" | 4.00" | 7.56" | 0.44" | 400 | 0.32 |
| S0154-HH10 | 3/8" | 6.00" | 10.38" | 0.50" | 700 | 0.66 |
| S0154-HH13 | 1/2" | 6.00" | 10.62" | 0.63" | 1,000 | 1.26 |
| S0154-HH16 | 5/8" | 8.00" | 14.38" | 0.63" | 1,500 | 2.30 |
| S0154-HH20 | 3/4" | 10.00" | 16.87" | 1.10" | 2,000 | 3.85 |

NOTE:
ECONOMICAL, YET HIGH QUALITY TURNBUCKLE WITH PRECISION CAST BODY. HOOKS ARE FORMED. THREADS ARE STANDARD "UNC".

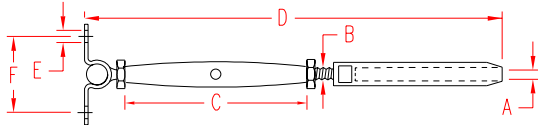
TURNBUCKLE JAW & JAW 316 STAINLESS STEEL



| ITEM | A (size) | B | C | D | E | WLL (lb) |
|------------|-------------|-------|--------|-------|-------|-------------|
| S0101-0005 | 3/16" | 3.13" | 4.75" | 0.18" | 0.30" | 300 |
| S0101-0007 | 1/4" | 3.50" | 5.50" | 0.22" | 0.38" | 440 |
| S0101-0008 | 5/16" | 4.31" | 6.25" | 0.30" | 0.40" | 800 |
| S0101-0010 | 3/8" | 4.87" | 7.75" | 0.37" | 0.46" | 1,200 |
| S0101-0013 | 1/2" | 5.80" | 9.50" | 0.46" | 0.59" | 2,200 |
| S0101-0016 | 5/8" | 7.50" | 12.00" | 0.60" | 0.65" | 2,800 |

NOTE:
THIS CLOSED TYPE TURNBUCKLE IS IDEAL FOR ARCHITECTURAL APPLICATIONS. BODY IS MACHINED FROM TUBING. JAWS ARE FORMED AND WELDED. THREADS ARE STANDARD "UNC".

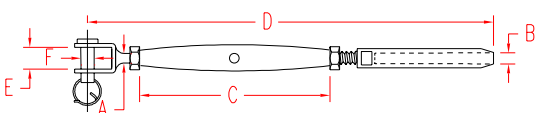
TURNBUCKLE WALL MOUNT & SWAGE 316 STAINLESS STEEL



| ITEM | A (size) | B | C | D | E | F | WT (lb) |
|------------|-------------|------|-------|-------|-------|-------|------------|
| S0784-0703 | 1/8" | 1/4" | 4.20" | 7.25" | 0.25" | 1.58" | 0.25 |
| S0784-0704 | 5/32" | 1/4" | 4.20" | 7.50" | 0.25" | 1.58" | 0.28 |
| S0784-0705 | 3/16" | 1/4" | 4.20" | 8.00" | 0.25" | 1.58" | 0.32 |

NOTE:
THREADS ARE "UNF". MACHINE SWAGE ONLY. OTHER TURNBUCKLES WITH QUICK ATTACH FITTINGS ARE SHOWN ON PAGES 34.

TURNBUCKLE JAW & SWAGE 316 STAINLESS STEEL



| ITEM | A (size) | B | C | D | E | F | WT (lb) |
|------------|-------------|-------|-------|--------|-------|-------|------------|
| S0781-0703 | 1/4" | 1/8" | 4.20" | 7.50" | 0.38" | 0.22" | 0.19 |
| S0781-0704 | 1/4" | 5/32" | 4.20" | 7.75" | 0.38" | 0.22" | 0.21 |
| S0781-0705 | 1/4" | 3/16" | 4.25" | 8.25" | 0.38" | 0.22" | 0.23 |
| S0781-0904 | 5/16" | 5/32" | 4.32" | 8.19" | 0.40" | 0.30" | 0.35 |
| S0781-0905 | 5/16" | 3/16" | 4.32" | 8.56" | 0.40" | 0.30" | 0.37 |
| S0781-1005 | 3/8" | 3/16" | 4.90" | 9.25" | 0.46" | 0.37" | 0.53 |
| S0781-1007 | 3/8" | 1/4" | 4.90" | 10.00" | 0.46" | 0.37" | 0.60 |
| S0781-1307 | 1/2" | 1/4" | 5.87" | 11.87" | 0.59" | 0.46" | 1.09 |
| S0781-1309 | 1/2" | 5/16" | 5.87" | 12.62" | 0.59" | 0.46" | 1.21 |
| S0781-1610 | 5/8" | 3/8" | 7.48" | 15.00" | 0.70" | 0.55" | 2.50 |
| S0781-2013 | 3/4" | 1/2" | 8.66" | 17.40" | 0.94" | 0.75" | 4.20 |

NOTE: OTHER CONFIGURATIONS ARE AVAILABLE. THREADS ARE "UNF". MACHINE SWAGE ONLY.



TEL 508-732-9191 • FAX 508-732-9798 • ORDERS ONLY 800-394-2222

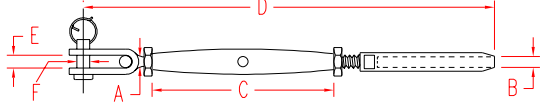
www.suncorstainless.com

TURNBUCKLES

TURNBUCKLES

TURNBUCKLE TOGGLE & SWAGE

316 STAINLESS STEEL

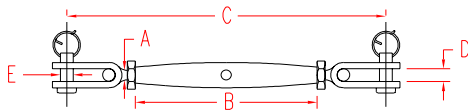


| ITEM | A | B | C | D | E | F | WT |
|------------|--------|-------|-------|--------|-------|-------|------|
| | (size) | | | | | | (lb) |
| S0782-0501 | 3/16" | 1/16" | 3.56" | 6.62" | 0.26" | 0.19" | 0.14 |
| S0782-0502 | 3/16" | 3/32" | 3.56" | 6.87" | 0.26" | 0.19" | 0.14 |
| S0782-0702 | 1/4" | 3/32" | 4.20" | 7.62" | 0.35" | 0.23" | 0.22 |
| S0782-0703 | 1/4" | 1/8" | 4.20" | 7.87" | 0.35" | 0.23" | 0.25 |
| S0782-0704 | 1/4" | 5/32" | 4.20" | 8.12" | 0.35" | 0.23" | 0.27 |
| S0782-0904 | 5/16" | 5/32" | 4.32" | 8.56" | 0.40" | 0.31" | 0.40 |
| S0782-0905 | 5/16" | 3/16" | 4.32" | 9.00" | 0.40" | 0.31" | 0.43 |
| S0782-1005 | 3/8" | 3/16" | 4.90" | 9.75" | 0.56" | 0.37" | 0.64 |
| S0782-1007 | 3/8" | 1/4" | 4.90" | 10.44" | 0.56" | 0.37" | 0.69 |
| S0782-1307 | 1/2" | 1/4" | 5.87" | 12.25" | 0.63" | 0.47" | 1.32 |
| S0782-1309 | 1/2" | 5/16" | 5.87" | 13.00" | 0.63" | 0.47" | 1.50 |
| S0782-1610 | 5/8" | 3/8" | 7.50" | 17.00" | 0.80" | 0.62" | 2.69 |

NOTE: OTHER CONFIGURATIONS ARE AVAILABLE. THREADS ARE "UNF". MACHINE SWAGE ONLY.

TURNBUCKLE TOGGLE & TOGGLE

316 STAINLESS STEEL

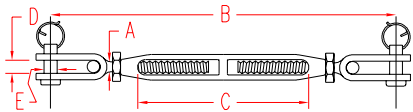


| ITEM | A | B | C | D | E | WLL |
|------------|--------|-------|--------|-------|-------|-------|
| | (size) | | | | | (lb) |
| S0783-0005 | 3/16" | 3.56" | 6.00" | 0.26" | 0.19" | 240 |
| S0783-0007 | 1/4" | 4.20" | 6.87" | 0.35" | 0.23" | 550 |
| S0783-0008 | 5/16" | 4.32" | 7.63" | 0.40" | 0.31" | 860 |
| S0783-0010 | 3/8" | 4.90" | 9.12" | 0.56" | 0.37" | 1,700 |
| S0783-0013 | 1/2" | 5.87" | 10.87" | 0.63" | 0.47" | 2,060 |
| S0783-0016 | 5/8" | 7.50" | 16.25" | 0.80" | 0.62" | 2,800 |

NOTE: THIS TURNBUCKLE IS IDEAL FOR ARCHITECTURAL AND MARINE APPLICATIONS. BODY IS MACHINED FROM TUBING. TOGGLES ARE FORMED. THREADS ARE "UNF".

TURNBUCKLE TOGGLE & TOGGLE

CHROMED BRONZE BODY & STAINLESS ENDS

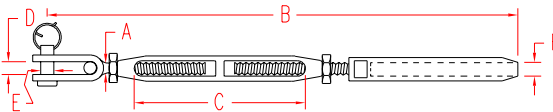


| ITEM | A | B | C | D | E | WLL |
|------------|--------|--------|--------------|-------|-------|-------|
| | (size) | | (adjustment) | | | (lb) |
| S0785-0007 | 1/4" | 7.12" | 3.50" | 0.35" | 0.23" | 550 |
| S0785-0009 | 5/16" | 8.25" | 3.80" | 0.40" | 0.31" | 860 |
| S0785-0010 | 3/8" | 9.75" | 4.40" | 0.56" | 0.37" | 1,700 |
| S0785-0013 | 1/2" | 11.62" | 4.62" | 0.63" | 0.47" | 2,060 |
| S0785-0016 | 5/8" | 16.00" | 6.00" | 0.79" | 0.62" | 2,375 |

NOTE: SILICON BRONZE, THEN CHROMED TO PREVENT GALLING. THE END FITTINGS ARE MADE FROM 316 STAINLESS STEEL. THREADS ARE "UNF".

TURNBUCKLE TOGGLE & SWAGE

CHROMED BRONZE BODY & STAINLESS ENDS

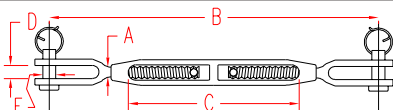


| ITEM | A | B | C | D | E | F | WT |
|------------|--------|--------|--------------|-------|-------|--------|------|
| | (size) | | (adjustment) | | | (wire) | (lb) |
| S0786-0703 | 1/4" | 8.37" | 3.50" | 0.35" | 0.23" | 1/8" | 0.27 |
| S0786-0704 | 1/4" | 8.81" | 3.50" | 0.35" | 0.23" | 5/32" | 0.28 |
| S0786-0705 | 1/4" | 8.87" | 3.50" | 0.35" | 0.23" | 3/16" | 0.32 |
| S0786-0904 | 5/16" | 9.25" | 3.80" | 0.40" | 0.31" | 5/32" | 0.42 |
| S0786-0905 | 5/16" | 9.62" | 3.80" | 0.40" | 0.31" | 3/16" | 0.44 |
| S0786-1005 | 3/8" | 11.50" | 4.40" | 0.56" | 0.37" | 3/16" | 0.63 |
| S0786-1007 | 3/8" | 11.50" | 4.40" | 0.56" | 0.37" | 1/4" | 0.67 |
| S0786-1307 | 1/2" | 13.00" | 4.62" | 0.63" | 0.47" | 1/4" | 1.48 |
| S0786-1308 | 1/2" | 13.25" | 4.62" | 0.63" | 0.47" | 9/32" | 1.50 |
| S0786-1309 | 1/2" | 13.75" | 4.62" | 0.63" | 0.47" | 5/16" | 1.50 |
| S0786-1610 | 5/8" | 17.31" | 6.06" | 0.79" | 0.62" | 3/8" | 3.14 |

NOTE: THE END FITTINGS ARE MADE FROM 316 STAINLESS STEEL. THREADS ARE "UNF". MACHINE SWAGE ONLY.

TURNBUCKLE JAW & JAW

CHROMED BRONZE BODY & ENDS



| ITEM | A | B | C | D | E | WLL | WT |
|------------|--------|--------|--------------|-------|-------|-------|------|
| | (size) | | (adjustment) | | | (lb) | (lb) |
| S0787-0007 | 1/4" | 7.25" | 3.50" | 0.25" | 0.25" | 550 | 0.30 |
| S0787-0009 | 5/16" | 8.50" | 3.80" | 0.31" | 0.31" | 860 | 0.45 |
| S0787-0010 | 3/8" | 8.87" | 4.40" | 0.38" | 0.38" | 1,700 | 0.86 |
| S0787-0013 | 1/2" | 10.75" | 4.62" | 0.50" | 0.50" | 2,060 | 1.62 |
| S0787-0016 | 5/8" | 13.50" | 6.02" | 0.63" | 0.63" | 2,375 | 3.10 |

NOTE: COMPLETE TURNBUCKLE IS FORGED SILICON BRONZE, THEN CHROMED TO PREVENT GALLING. THREADS ARE "UNF".



Key:



Made in USA



Drop Forged



Precision Cast



Precision Machined



Wire Formed



Load Rated



Suncor Exclusive

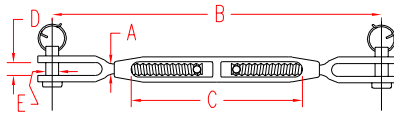


New Product

ORDERS ONLY: 800-394-2222 (USA)
877-495-5510 (CANADA)

All logos, icons, images, measurements and descriptions are the sole property of Suncor Stainless, Inc. © 2002 Suncor Stainless, Inc.

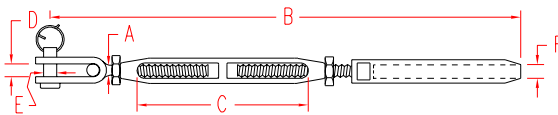
TURNBUCKLE JAW & JAW SILICON BRONZE BODY & ENDS



| ITEM | A (size) | B (adjustment) | C | D | E | WLL (lb) | WT (lb) |
|------------|-------------|-------------------|-------|-------|-------|-------------|------------|
| S0788-0007 | 1/4" | 7.25" | 3.50" | 0.25" | 0.25" | 550 | 0.30 |
| S0788-0009 | 5/16" | 8.50" | 3.80" | 0.31" | 0.31" | 860 | 0.45 |
| S0788-0010 | 3/8" | 8.87" | 4.40" | 0.38" | 0.38" | 1,700 | 0.86 |
| S0788-0013 | 1/2" | 10.75" | 4.62" | 0.50" | 0.50" | 2,060 | 1.62 |
| S0788-0016 | 5/8" | 13.00" | 6.07" | 0.63" | 0.63" | 2,375 | 3.10 |

NOTE:
COMPLETE TURNBUCKLE IS FORGED SILICON BRONZE.
THREADS ARE "UNF".

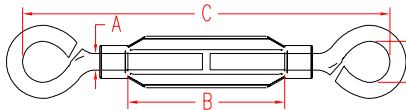
TURNBUCKLE TOGGLE & SWAGE BRONZE BODY & STAINLESS ENDS



| ITEM | A (size) | B (adjustment) | C | D | E | F (wire) | WT (lb) |
|------------|-------------|-------------------|-------|-------|-------|-------------|------------|
| S0789-0703 | 1/4" | 8.37" | 3.50" | 0.35" | 0.23" | 1/8" | 0.27 |
| S0789-0704 | 1/4" | 8.81" | 3.50" | 0.35" | 0.23" | 5/32" | 0.28 |
| S0789-0705 | 1/4" | 8.87" | 3.50" | 0.35" | 0.23" | 3/16" | 0.32 |
| S0789-0904 | 5/16" | 9.25" | 3.80" | 0.40" | 0.31" | 5/32" | 0.42 |
| S0789-0905 | 5/16" | 9.62" | 3.80" | 0.40" | 0.31" | 3/16" | 0.44 |
| S0789-1005 | 3/8" | 11.50" | 4.40" | 0.56" | 0.37" | 3/16" | 0.63 |
| S0789-1007 | 3/8" | 11.50" | 4.40" | 0.56" | 0.37" | 1/4" | 0.67 |
| S0789-1307 | 1/2" | 13.00" | 4.62" | 0.63" | 0.47" | 1/4" | 1.48 |
| S0789-1308 | 1/2" | 13.25" | 4.62" | 0.63" | 0.47" | 9/32" | 1.50 |
| S0789-1309 | 1/2" | 13.75" | 4.62" | 0.63" | 0.47" | 5/16" | 1.50 |
| S0789-1610 | 5/8" | 17.31" | 6.06" | 0.79" | 0.62" | 3/8" | 3.14 |

NOTE:
THREADS ARE "UNF". OTHER CONFIGURATIONS,
SUCH AS TOGGLE/TOGGLE ARE AVAILABLE.

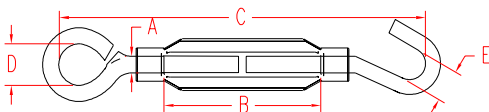
TURNBUCKLE EYE & EYE ALUMINUM & STAINLESS STEEL



| ITEM | A (size) | B (adjustment) | C | D | WLL (lb) | WT (lb) |
|--------------|-------------|-------------------|-------|-------|-------------|------------|
| A0154-EE05-A | 3/16" | 1.61" | 3.72" | 0.31" | 70 | 0.04 |
| A0154-EE07-A | 1/4" | 2.04" | 4.98" | 0.52" | 160 | 0.12 |
| A0154-EE08-A | 5/16" | 2.62" | 5.88" | 0.49" | 230 | 0.20 |
| A0154-EE10-A | 3/8" | 2.98" | 7.40" | 0.63" | 300 | 0.38 |

NOTE:
LOWEST COST TURNBUCKLE.
BODY IS ALUMINUM; ENDS ARE 304 STAINLESS STEEL.
TO BE USED IN LIGHT DUTY APPLICATIONS ONLY.

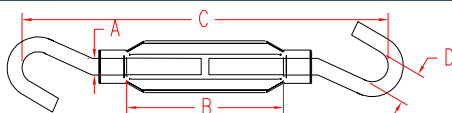
TURNBUCKLE HOOK & EYE ALUMINUM & STAINLESS STEEL



| ITEM | A (size) | B (adjustment) | C | D | E | WLL (lb) |
|--------------|-------------|-------------------|-------|-------|-------|-------------|
| A0154-HE05-A | 3/16" | 1.61" | 3.70" | 0.31" | 0.26" | 40 |
| A0154-HE07-A | 1/4" | 2.04" | 5.02" | 0.52" | 0.48" | 80 |
| A0154-HE08-A | 5/16" | 2.62" | 6.05" | 0.49" | 0.48" | 125 |
| A0154-HE10-A | 3/8" | 2.98" | 7.37" | 0.63" | 0.60" | 180 |

NOTE:
LOWEST COST TURNBUCKLE.
BODY IS ALUMINUM; ENDS ARE 304 STAINLESS STEEL.
TO BE USED IN LIGHT DUTY APPLICATIONS ONLY.

TURNBUCKLE HOOK & HOOK ALUMINUM & STAINLESS STEEL



| ITEM | A (size) | B (adjustment) | C | D | WLL (lb) | WT (lb) |
|--------------|-------------|-------------------|-------|-------|-------------|------------|
| A0154-HH05-A | 3/16" | 1.61" | 3.90" | 0.26" | 70 | 0.04 |
| A0154-HH07-A | 1/4" | 2.04" | 5.08" | 0.48" | 100 | 0.11 |
| A0154-HH08-A | 5/16" | 2.62" | 6.22" | 0.48" | 150 | 0.20 |
| A0154-HH10-A | 3/8" | 2.98" | 7.33" | 0.60" | 200 | 0.36 |

NOTE:
LOWEST COST TURNBUCKLE.
BODY IS ALUMINUM; ENDS ARE 304 STAINLESS STEEL.
TO BE USED IN LIGHT DUTY APPLICATIONS ONLY.



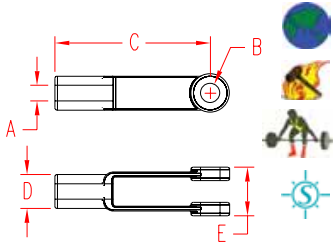
TEL 508-732-9191 • FAX 508-732-9798 • ORDERS ONLY 800-394-2222

www.suncorstainless.com

TURNBUCKLES

YOKE END UNTHREADED

316-NM STAINLESS STEEL

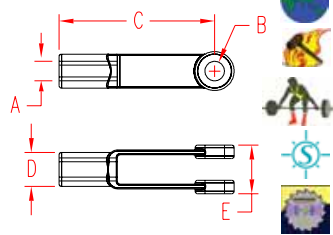


| ITEM | A | B | C | D | E | WLL |
|------------|----------------|-------|-------|-------|-------|-------|
| | (nominal size) | | | | | (lb) |
| S0113-U005 | 3/16" | 0.19" | 1.56" | 0.31" | 0.44" | 300 |
| S0113-U007 | 1/4" | 0.25" | 2.00" | 0.44" | 0.63" | 500 |
| S0113-U008 | 5/16" | 0.31" | 2.25" | 0.50" | 0.75" | 800 |
| S0113-U010 | 3/8" | 0.38" | 2.55" | 0.63" | 0.88" | 1,200 |
| S0113-U013 | 1/2" | 0.50" | 3.00" | 0.81" | 1.13" | 2,200 |
| S0113-U016 | 5/8" | 0.63" | 4.94" | 1.06" | 1.38" | 3,500 |
| S0113-U020 | 3/4" | 0.75" | 6.06" | 1.25" | 1.63" | 5,200 |

NOTE:
SOLD WITH PINS. ALSO CALLED CLEVISSES.
THIS ITEM IS NOT THREADED. CALL FOR SPECIAL THREADS.

YOKE END THREADED

316-NM STAINLESS STEEL
UNC

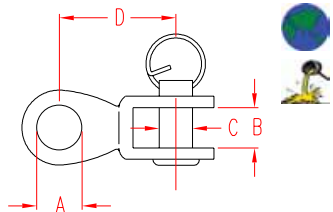


| ITEM | A | B | C | D | E | WLL |
|------------|---------------|-------|-------|-------|-------|-------|
| | (thread size) | | | | | (lb) |
| S0113-RC05 | 3/16" | 0.19" | 1.56" | 0.31" | 0.44" | 300 |
| S0113-RC07 | 1/4" | 0.25" | 2.00" | 0.44" | 0.63" | 500 |
| S0113-RC08 | 5/16" | 0.31" | 2.25" | 0.50" | 0.75" | 800 |
| S0113-RC10 | 3/8" | 0.38" | 2.55" | 0.63" | 0.88" | 1,200 |
| S0113-RC13 | 1/2" | 0.50" | 3.00" | 0.81" | 1.13" | 2,200 |
| S0113-RC16 | 5/8" | 0.63" | 4.94" | 1.06" | 1.38" | 3,500 |
| S0113-RC20 | 3/4" | 0.75" | 6.06" | 1.25" | 1.63" | 5,200 |

NOTE:
SOLD WITH PINS. ALSO CALLED CLEVISSES.
UNC RIGHT HAND THREADED.

RIGGING TOGGLE

316 STAINLESS STEEL



| ITEM | A | B | C | D | WLL | WT |
|------------|--------|-------|-------|-------|-------|------|
| | (size) | | | | (lb) | (lb) |
| S0168-0005 | 7/32" | 0.24" | 0.20" | 0.87" | 300 | 0.05 |
| S0168-0006 | 1/4" | 0.28" | 0.24" | 1.12" | 400 | 0.06 |
| S0168-0008 | 11/32" | 0.40" | 0.32" | 1.25" | 800 | 0.10 |
| S0168-0010 | 3/8" | 0.48" | 0.36" | 1.43" | 1,200 | 0.16 |
| S0168-0012 | 1/2" | 0.52" | 0.48" | 2.00" | 1,600 | 0.32 |

NOTE:
INCLUDES REMOVABLE CLEVIS PIN.

RIGGING TOGGLE

BRONZE

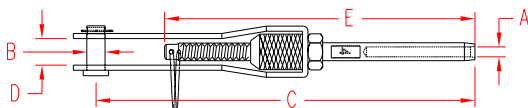
CHROME ON BRONZE



| ITEM | A | B | C | D | WLL | WT |
|-------------------------|--------|-------|-------|-------|-------|------|
| | (size) | | | | (lb) | (lb) |
| BRONZE | | | | | | |
| S0168-BZ07 | 1/4" | 0.26" | 0.25" | 1.06" | 440 | 0.08 |
| S0168-BZ08 | 5/16" | 0.31" | 0.31" | 1.50" | 800 | 0.11 |
| S0168-BZ10 | 3/8" | 0.38" | 0.37" | 1.45" | 1,200 | 0.17 |
| S0168-BZ12 | 7/16" | 0.47" | 0.43" | 1.87" | 1,600 | 0.28 |
| S0168-BZ13 | 1/2" | 0.53" | 0.50" | 1.87" | 2,200 | 0.45 |
| CHROME ON BRONZE | | | | | | |
| S0168-CB07 | 1/4" | 0.26" | 0.25" | 1.06" | 440 | 0.08 |
| S0168-CB08 | 5/16" | 0.31" | 0.31" | 1.50" | 800 | 0.11 |
| S0168-CB10 | 3/8" | 0.38" | 0.37" | 1.45" | 1,200 | 0.17 |
| S0168-CB12 | 7/16" | 0.47" | 0.43" | 1.87" | 1,600 | 0.28 |
| S0168-CB13 | 1/2" | 0.53" | 0.50" | 1.87" | 2,200 | 0.45 |

LIFELINE ADJUSTER

316 STAINLESS STEEL



| ITEM | A | B | C | D | E | WT |
|------------|--------|-------|-------|-------|-------|------|
| | (size) | | | | | (lb) |
| S0745-0001 | 5/32" | 0.25" | 5.31" | 0.37" | 4.35" | 0.16 |

NOTE:
TENSIONER DESIGNED FOR, BUT NOT LIMITED TO, LIFELINE APPLICATIONS. S0731-0703 SWAGE STUD (PAGE 24) IS USED IN THIS ASSEMBLY.



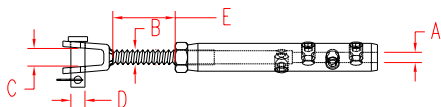
Key:



ORDERS ONLY: 800-394-2222 (USA)
877-495-5510 (CANADA)

All logos, icons, images, measurements and descriptions are the sole property of Suncor Stainless, Inc.
© 2002 Suncor Stainless, Inc.

LIFELINE TURNBUCKLE 316 STAINLESS STEEL



| ITEM | A | B | C | D | E | WLL |
|-------------------|------------|-------|-------|-------|--------------|------|
| | (wire) | | | | (adjustment) | (lb) |
| LEFT HAND | | | | | | |
| S0780-L604 | 1/8"-5/32" | 0.25" | 0.34" | 0.23" | 1.19" | 580 |
| S0780-L605 | 3/16" | 0.25" | 0.34" | 0.23" | 1.19" | 840 |
| RIGHT HAND | | | | | | |
| S0780-R604 | 1/8"-5/32" | 0.25" | 0.34" | 0.23" | 1.19" | 580 |
| S0780-R605 | 3/16" | 0.25" | 0.34" | 0.23" | 1.19" | 840 |

NOTE:
INNOVATIVE DESIGN WITH A BREAK STRENGTH GREATER THAN THE WIRE ITSELF. TURNBUCKLE SYSTEM UTILIZES A SERIES OF SET SCREWS WHICH ALLOW RIGGING A LIFELINE IN MINUTES.

LIFELINE KIT 316 STAINLESS STEEL



| ITEM | SIZE | ADJUSTMENT | LENGTH | WLL | WT |
|----------------------|---------------------|------------|--------|-------------|--------------|
| S0780-KIT4 | 3/16" | 2.38" | 30' | (lb) 620 | (lb) 3.38 |
| KIT INCLUDES: | | | | | |
| S0780-L605 | 3/16" | 1.19" | | | |
| S0780-R605 | 3/16" | 1.19" | | | |
| S0780-0508 | 3/16"WIREx5/16" PVC | | 30' | 620 | |

NOTE:
WIRE IS RIGHT HAND LAY IWRC PVC COATED WHITE, OIL FREE AND POLISHED. TURNBUCKLE SYSTEM UTILIZES A SERIES OF SET SCREWS WHICH ALLOW RIGGING A LIFELINE IN MINUTES. COMES WITH ALLEN WRENCH FOR SET SCREWS. REFER TO PAGE 37 FOR INFORMATION ON PVC COATED WIRE ROPE (S0708-0508). DETAILED SPECS FOR S0780 TURNBUCKLES LISTED ABOVE.



Optional (A) PVC Coated 7x7 or (B) 7x19 stainless steel wire ropes

Lifelines are the single most important piece of safety equipment on your boat. A rigger's knowledge and experience needed to perform lifeline work should give you peace of mind knowing the work was done right. At Suncor Stainless, Inc. you will find all the know-how, quality components, and technical information.

New! Lifeline Adjuster
Tensioner designed for, but not limited to, lifeline applications (p.20)



Lifeline Turnbuckle



Do It Yourself!



Wire Rope, p.37

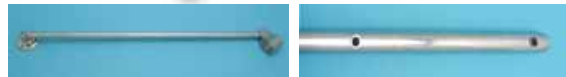
New! Lifeline Turnbuckle Kit

Brand new design certified with a break strength greater than the wire itself. This turnbuckle system utilizes a series of set screws, which allow rigging a lifeline yourself in minutes.

Lifeline Turnbuckle, above



Product listings for our full line of swageless QuickAttach™ terminals can be found on p.32.



Stanchion Brace, p.108

Stanchions, p.108

Swageless Terminals

Suncor Stainless has made every effort to provide effective and easy to use rigging solutions. Keeping with our tradition, the option of swageless terminals (p.31) is available. These fittings are ideal for repair of rigging without swaging and is another option following the "Do it yourself" concept in Suncor's lifeline systems! Please call for more information today.



TEL 508-732-9191 • FAX 508-732-9798 • ORDERS ONLY 800-394-2222
www.suncorstainless.com



Introducing the newly designed RailEasy™ turnbuckle, designed specifically for railing systems. Patented universal design eliminates LH/RH confusion. Mechanical swaging allows installer to cut cables on site. Three easy installation steps yield an attractive, high strength, and clean looking railing system. RailEasy™ is your obvious choice for clean, unobstructed views.

RailEasy™ Turnbuckle

Patented Simplicity



Step 1
Fully seat wire rope.



Step 2
Tighten cone onto receiver.



Step 3
Rotate body to tension wire rope.

Low Maintenance

Universal parts fit straight runs, angles and stairs. End result is a clean, streamlined look with the maintenance-free quality that 316 stainless steel provides.

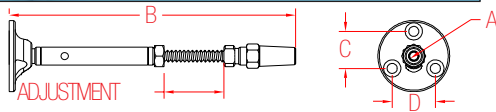


S0981



S0982

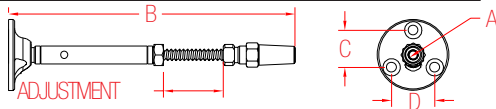
RAILEASY™ TURNBUCKLE FLAT BASE 316 STAINLESS STEEL



| ITEM | A | B | C | D | ADJUSTMENT | WT |
|---------------------------------|---|-------|-------|-------|------------|------|
| | (size) | | | | | (lb) |
| FLAT BASE S0981-0004 | 5/32" | 6.00" | 0.78" | 0.90" | 1.25" | 0.25 |
| ROUND BASE S0982-0004 | 5/32" | 6.00" | 1.00" | 1.50" | 1.25" | 0.25 |
| S0980-0001 | Spare Wedges (10 pack) | | | | | 0.25 |
| S0980-0002 | Spare Compression Cones | | | | | 0.25 |
| S0914-0538 | Phillips Head Wood Screws S.S. #8 x 1-1/2" (100 pack) | | | | | 0.75 |

NOTE: TURNBUCKLE DESIGNED SPECIFICALLY FOR CABLE RAILING APPLICATIONS. USED AT BOTH ENDS OF CABLE RUN, UNIVERSAL DESIGN NO LEFT OR RIGHT NEEDED. MECHANICAL SWAGE FITTING ATTACHES FAST USING SIMPLE HAND TOOLS.

RAILEASY™ SET SCREW TURNBUCKLE 316 STAINLESS STEEL



| ITEM | A | B | C | D | ADJUSTMENT | WT |
|------------|-----------------------------|-------|-------|-------|------------|------|
| | (size) | | | | | (lb) |
| S0791-0004 | 5/32" | 6.00" | 0.78" | 0.90" | 1.25" | 0.25 |
| P0791-GR04 | Spare Grub Screws (10 pack) | | | | | 0.05 |

NOTE: TURNBUCKLE DESIGNED SPECIFICALLY FOR CABLE RAILING APPLICATIONS. USED AT BOTH ENDS OF CABLE RUN, UNIVERSAL DESIGN NO LEFT OR RIGHT NEEDED. TURNBUCKLE SYSTEM UTILIZES A SET OF GRUB SCREWS WHICH ALLOW CONNECTION TO WIRE ROPE.