

SUNCOR STAINLESS, INC.

TRAILER

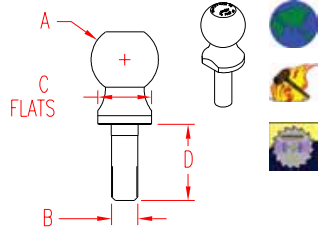


www.suncorstainless.com

121

HITCH BALL

304 STAINLESS STEEL

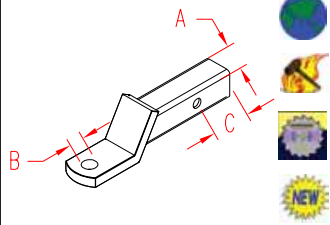


ITEM	A	B	C	D	CAPACITY	WT
	(ball size)	(shank)				(lb)
C0260-4720	1-7/8"	0.75"	1.50"	2.12"	2,000 LB	1.83
C0260-4725	1-7/8"	1.00"	1.50"	2.12"	2,000 LB	2.25
C0260-5020	2"	0.75"	1.75"	2.12"	3,500 LB	2.10
C0260-5025	2"	1.00"	1.75"	2.12"	3,500 LB	2.56
C0260-6025	2-5/16"	1.00"	2.00"	2.12"	6,000 LB	3.00

NOTE: MIRROR POLISHED. SOLID 304. TWO FLATS AT THE BASE ALLOW EASY HOLDING DURING INSTALLATION. TORQUE TO 160 FT LB MIN. TOWING CAPACITY AND SIZE ARE PERMANENTLY MARKED ON TOP. SOLD WITH LOCK WASHER AND NUT IN CLAMSHELL PACK.

TRAILER TONGUE

304 STAINLESS STEEL



ITEM	A	B	C	WT
	(size)			(lb)
C0266-0000	2"	1.00"	2.75"	7.82

SPACER w/ WASHER FOR 3/4" SHANK

C0266-0001

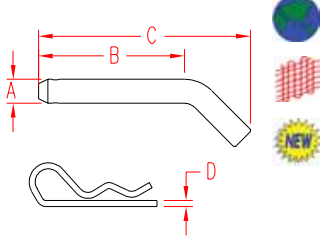
0.16

NOTE: MIRROR POLISHED. PRECISION CAST. HEAVY DUTY TRAILER TONGUE IS DESIGNED TO FIT INTO A 2" RECEIVER AND IS DRILLED TO ACCEPT A 1" SHANK HITCH BALL. SPACER & WASHER AVAILABLE TO ACCOMMODATE SUNCOR'S 3/4" SHANK HITCH BALLS. PACKAGED WITH BARCODE AND LABEL.



TRAILER PIN

304 STAINLESS STEEL

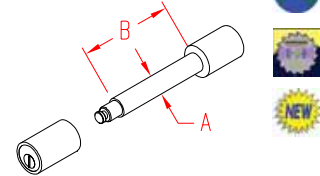


ITEM	A	B	C	D	WT
	(size)				(lb)
C0267-0000	5/8"	4.00"	5.50"	5/32"	0.55

NOTE: PIN DESIGNED FOR SQUARE RECEIVER HITCH, INCLUDES RETAINING PIN. HEAVY-DUTY CONSTRUCTION. NON-CORROSIVE STAINLESS STEEL, ASSURES YEARS OF SERVICE AND DURABILITY. PACKAGED AND BARCODED.

LOCKING TRAILER PIN

304 STAINLESS STEEL



ITEM	A	B	WT
	(size)		(lb)
C0267-1000	5/8"	2.65"	0.93

NOTE: MADE FROM HIGH QUALITY STAINLESS STEEL, SUNCOR'S TRAILER PIN LOCK OFFERS YEARS OF SERVICE AND RELIABILITY. HEAVY-DUTY CONSTRUCTION FEATURES A "NO FAIL" LOCKING LUG THAT IS BUILT TO LAST. EASY OPERATION. TURN THE KEY TO LOCK AND UNLOCK, WHICH MEANS IT CANNOT BE MISTAKINGLY LOCKED. CORROSION RESISTANT. INCLUDES TWO KEYS. PACKAGED AND BARCODED.

TRAILER KIT

304 STAINLESS STEEL



Kit Includes:

- Trailer Tongue
- Hitch Ball
- Trailer Pin w/ Ret. Pin
- Durable Carrying Case

ITEM	A	B	C	CAPACITY	WT
	(hitch ball)	(tongue)	(pin)		(lb)
S0268-2000	1-7/8"	2"	5/8"	2,000 LB	10.50
S0268-3500	2"	2"	5/8"	3,500 LB	10.81
S0268-6000	2-5/16"	2"	5/8"	6,000 LB	11.25

NOTE: COMPLETE STAINLESS STEEL TRAILER KIT. EVERYTHING NEEDED FOR DEPENDABLE TOWING. PRECISION MADE COMPONENTS IN A CONVENIENT CARRYING CASE. REFER TO OTHER PAGES IN CHAPTER FOR MORE INFORMATION ON THESE COMPONENTS AND OTHER TRAILER PRODUCTS.

THIS TRAILER KIT FEATURES SUNCOR'S QUALITY 1" SHANK HITCH BALLS, 2" SQUARE TRAILER TONGUE, AND 5/8" TRAILER PIN WITH RETAINING PIN SHOWN ABOVE. PACKAGED AND BARCODED.



Key:



ORDERS ONLY: 800-394-2222 (USA)
877-495-5510 (CANADA)

All logos, icons, images, measurements and descriptions are the sole property of Suncor Stainless, Inc. © 2002 Suncor Stainless, Inc.

TRAILER COUPLER 304 STAINLESS STEEL



ITEM	BALL (size)	CHANNEL WIDTH (width)	TOWING CAPACITY (lb)	WT (lb)
C0265-4750	1-7/8"	2.00"	2,000 LB	2.25
C0265-4765	1-7/8"	2.50"	2,000 LB	2.42
C0265-5050	2"	2.00"	3,500 LB	3.85
C0265-5065	2"	2.50"	3,500 LB	4.18
C0265-5075	2"	3.00"	3,500 LB	4.38

PRECISION FORMED, MIRROR POLISHED, SOLID 304. HIGH QUALITY LATCHING MECHANISM FEATURES A HEAVY DUTY SAFETY LATCH TO HELP PREVENT ACCIDENTAL UNCOUPLING AND A PADLOCK HOLE WITH PROVIDED "QUICK PIN" FOR TRAILER SECURITY. USES 1/2" X 3" BOLTS. TOWING CAPACITY AND SIZE ARE PERMANENTLY MARKED ON TOP. SOLD IN PROTECTIVE CLAMSHELL PACK.

CAUTION: CHECK NUT ON COUPLER BOTTOM AND TIGHTEN BEFORE USE.

DUAL DRIVE WINCH 304 STAINLESS STEEL



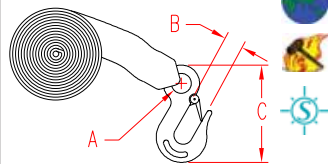
ITEM	LENGTH (size)	WIDTH	HEIGHT	WLL (lb)	WT (lb)
C0270-0001	9.00"	5.00"	6.00"	1,600	7.35

NOTE: DUAL DRIVE: LOAD IS DISTRIBUTED OVER 2 GEARS (ONE EACH SIDE) FOR SUPERIOR PERFORMANCE. WITHOUT STRAP AND HOOK. RATCHET LEVER CAN BE SET TO FORWARD, NEUTRAL OR REVERSE. NO FASTENERS INCLUDED. MEASURED WITHOUT 2" WIDE HANDLE.

C0270-2001 WINCH WITH STRAP AND HOOK

NOTE: WINCH AS ABOVE WITH WEBBING AND HOOK INCLUDED. ASSEMBLY IS WINCH, AN INSTALLED 20' WEB STRAP AND A FORGED EYE HOOK. REPLACEMENT STRAPS SOLD SEPARATELY: S0270-2050.

WEBBING AND HOOK 316 STAINLESS STEEL



ITEM	WEBBING (length)	A	B	C	WLL (lb)	WT (lb)
C0270-2050	20 FT.	0.64"	0.70"	4.00"	1,600	1.25

NOTE: HOOK IS FORGED STAINLESS 316 WITH SAFETY LATCH, ITEM S0454-0008 SHOWN ON PAGE 44.

WEBBING IS HIGH QUALITY, BLACK NYLON.

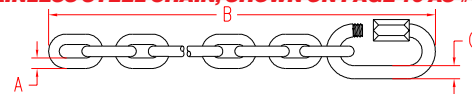
CAN BE USED SEPARATELY OR WITH WINCH S0270-0001. SIZE, WLL, LOGO, AND SS316 ARE PERMANENTLY FORGED INTO BODY OF HOOK.

TRAILER SAFETY CHAIN PACK 316L STAINLESS STEEL



ITEM	A (size)	B (length)	C (end link)	WLL (lb)	WT (lb)
C0275-0001	1/4"	24"	5/16"	1,600	1.35
C0275-0002	5/16"	24"	3/8"	2,400	2.20
PAIRS					
C0275-0001-2	1/4"	24"	5/16"	1,600	2.70
C0275-0002-2	5/16"	24"	3/8"	2,400	4.40

NOTE: FOR ADDITIONAL SAFETY, THIS KIT CONTAINS ONE HIGH QUALITY QUICK LINK, PERMANENTLY MARKED WITH WLL, LOGO, SS316. CHAIN IS U.S. PRODUCED STAINLESS STEEL CHAIN, SHOWN ON PAGE 10 AS #S0602.



RATCHET ASSEMBLY WITH HOOKS 304 STAINLESS STEEL & WEBBING



ITEM	WEBBING (width)	LENGTH (overall)	LENGTH (fixed end)	WLL (lb)	WT (lb)
S0201-S0525	1"	5'	8"	200	0.85
S0201-S1025	1"	10'	8"	200	0.98

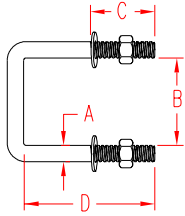
NOTE: WEBBING IS HIGH QUALITY NYLON. WELDED S HOOK PREVENTS WEBBING FROM SLIPPING OUT. "S" HOOKS ARE ITEM S0212-0025. FOR MORE SPECIFICATIONS, SEE PRODUCT ON PAGE 54.

FOR RATCHET BUCKLE SPECIFICATIONS, SEE ITEM S0201-0025 ON PAGE 78. ADDITIONAL TIE-DOWN KITS ALSO AVAILABLE.



TRAILER U-BOLT

304 STAINLESS STEEL

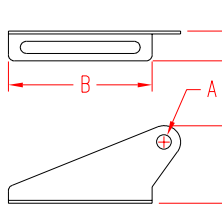


ITEM	A	THREAD	B	C	D	WLL	WT	
	(size)						(lb)	(lb)
S0276-102X4	1/2"	1/2" - 13	2.13"	1.50"	4.00"	2,020	0.68	
S0276-103X3	1/2"	1/2" - 13	3.13"	1.50"	3.00"	2,020	0.65	
S0276-103X4	1/2"	1/2" - 13	3.13"	1.50"	4.00"	2,020	0.70	
S0276-103X5	1/2"	1/2" - 13	3.13"	1.50"	5.00"	2,020	0.75	
S0276-103X6	1/2"	1/2" - 13	3.13"	1.50"	6.00"	2,020	0.80	
S0276-104X3	1/2"	1/2" - 13	4.13"	1.50"	3.00"	2,020	0.70	

NOTE:
STAINLESS TRAILER U-BOLTS ARE INTENDED TO REPLACE OR UPGRADE ORIGINAL TRAILER PARTS. EACH SET INCLUDES 2 NUTS AND 2 WASHERS.

SPLIT ROLLER BRACKETS

304 STAINLESS STEEL



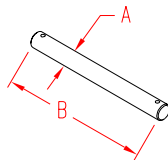
ITEM	A	B	C	D	WT
	(size)				(lb)
S0279-0001	5/8"	6.00"	3.25"	1.25"	0.50

NOTE:
SPLIT ROLLER BRACKETS ALLOW FOR ADJUSTMENT TO ANY WIDTH. ROLLER PIN HOLE IS 5/8". SOLD AS MATCHED SET, LEFT AND RIGHT. POLISHED STAINLESS 304. FASTENERS NOT INCLUDED.

OTHER BRACKETS IN STAINLESS ON SPECIAL BULK ORDER. PLEASE CALL FOR AVAILABILITY.

ROLLER SHAFT AND PALL NUTS

304 STAINLESS STEEL



ITEM	A	B	COTTER HOLE	WT
	(diameter)	(length)		(lb)
S0278-13135	1/2"	5.38"	1/8" (2)	0.30
S0278-13160	1/2"	6.38"	1/8" (2)	0.35
S0278-16135	5/8"	5.38"	1/8" (2)	0.45
S0278-16160	5/8"	6.38"	1/8" (2)	0.55
S0278-16240	5/8"	9.38"	1/8" (2)	0.85
S0278-16290	5/8"	11.38"	1/8" (2)	1.15
S0278-16340	5/8"	13.38"	1/8" (2)	1.35

NOTE:
DRILLED AT BOTH ENDS TO ACCEPT PROVIDED 1/8" COTTER PINS OR USE WITH PALL NUTS. SHAFTS SOLD EACH; NUTS SOLD IN PAIRS.

S0278-0013-2	1/2"	PALL NUTS (2)
S0278-0016-2	5/8"	PALL NUTS (2)

SUNCOR'S TRAILER CHECKLIST

- Coupler securely engages your hitch. The coupler and hitch ball must be rated for the same size. The size should be imprinted on both the ball and the hitch.
- Safety Chains are safely secured to trailer and tow vehicle in a criss-cross fashion under the tongue.
- Jack is fully cranked up (and parallel to tongue if swivel jack).
- Boat is securely tied down with tie-down straps. Your winch strap is not a tie-down strap. A winch controls your boat in a horizontal direction. Tie-downs control your boat in the vertical direction. You must have bow-eye and transom tie down straps securely attached whenever the trailer is in use.
- All fasteners/bolts are properly tightened. Pay particular attention to the lug nuts (tightened to 85 ft-lbs).
- Tires are properly inflated- read the tire sidewall to determine the correct tire pressure required. This rating will be different than your tow vehicle. Also check for tire wear, cracks, bubbles or foreign objects imbedded in the tire.
- Brake lights and other trailer lights are working.
- If the trailer is equipped with brakes, make sure they are functioning by lightly testing before getting on a major road.
- If the trailer is equipped with brakes, connect the breakaway cable (located on top of acuator) to the tow vehicle.

For Other Tie-Down and Webbing Products, see our section starting on page 77.



For Anchor Eye Nuts and Eye Bolts, see pages 70 and 71.



For LED Lights and Replacement Bulbs, see our LED section starting on page 116.



Key:



Made in USA



Drop Forged



Precision Machined



Wire Formed



Suncor Exclusive



Import



Precision Cast



Stamped



Load Rated



New Product

ORDERS ONLY: 800-394-2222 (USA)
877-495-5510 (CANADA)

All logos, icons, images, measurements and descriptions are the sole property of Suncor Stainless, Inc. © 2002 Suncor Stainless, Inc.